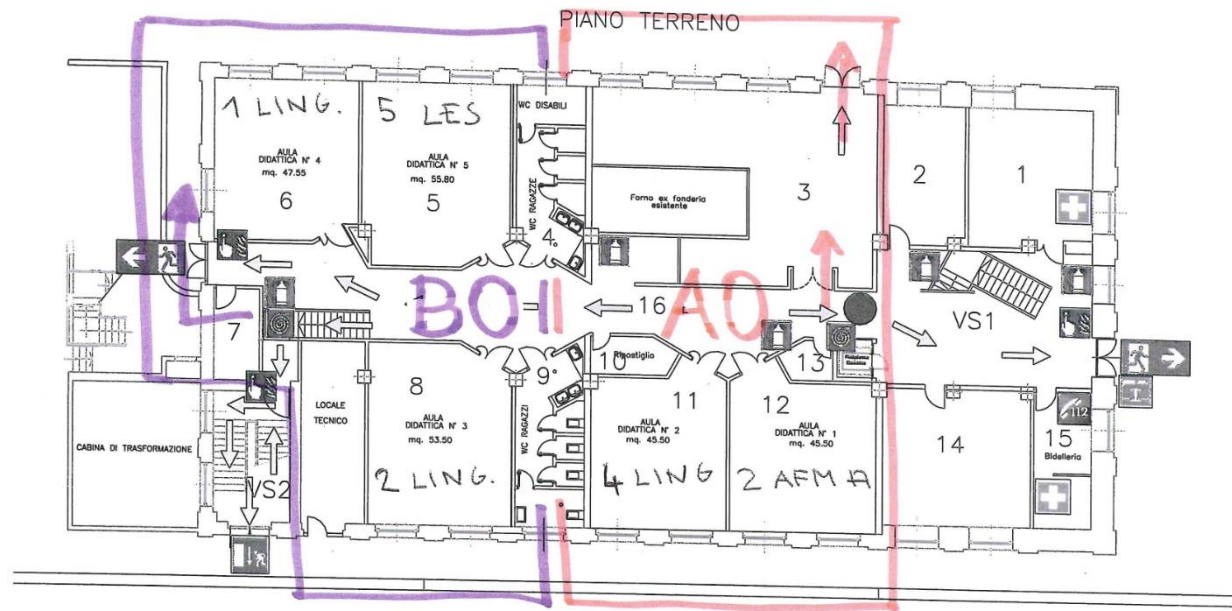
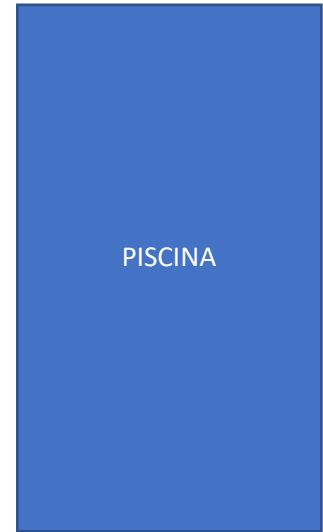
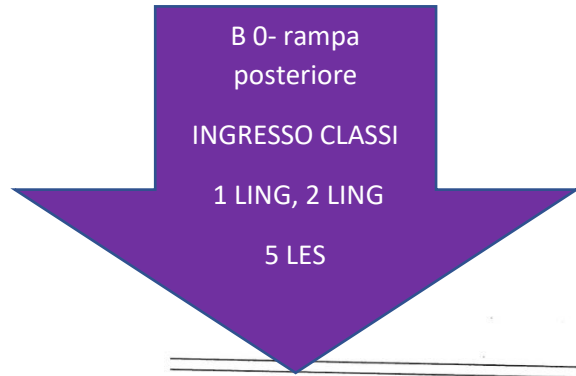
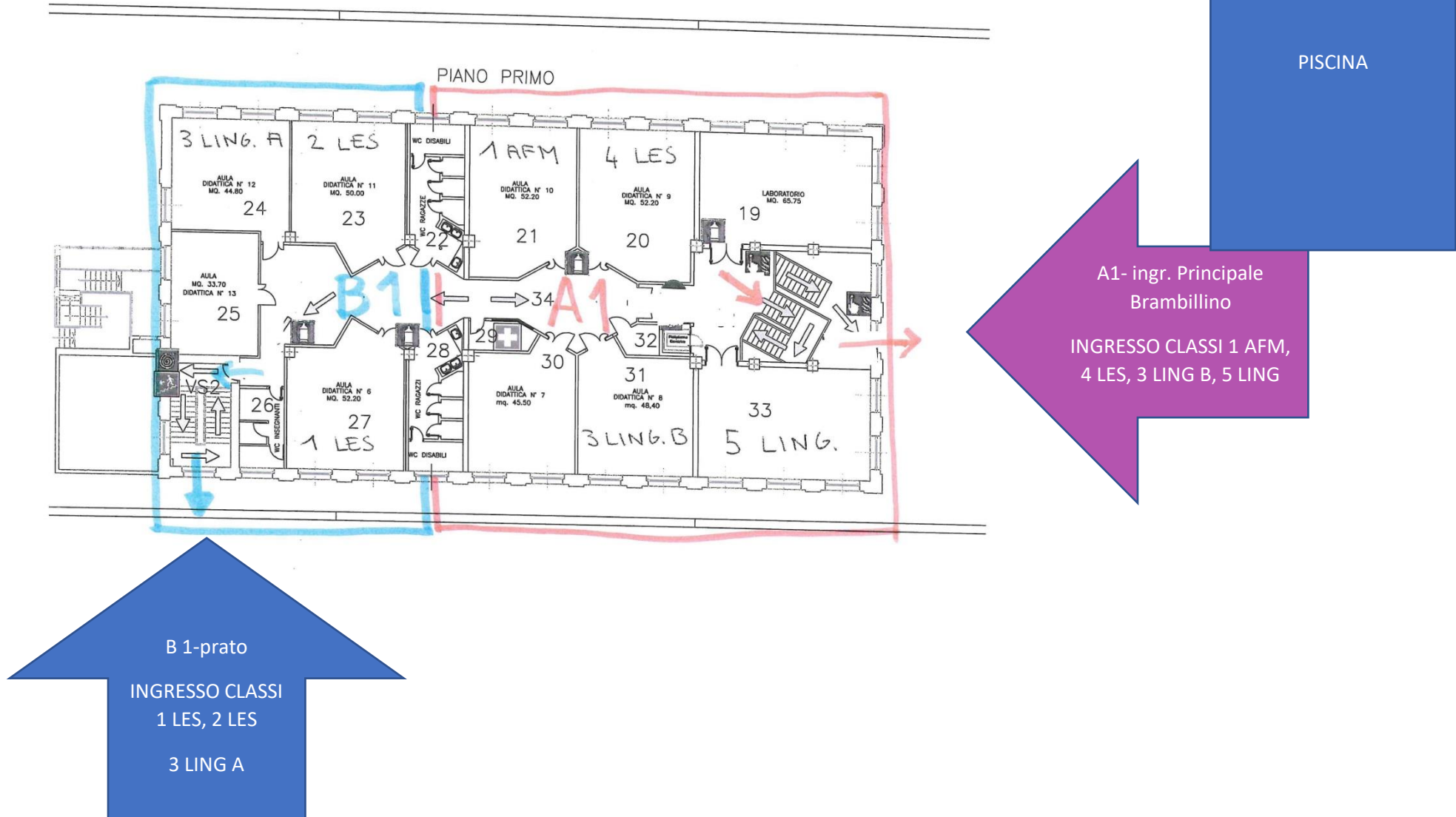


# Edificio "Brambillino" PIANO TERRENO



# Edificio "Brambillino" PIANO PRIMO



# Edificio "Brambilla" PIANO QUARTO

CORTILE e  
PORTICATO  
PRINCIPALE  
BRAMBILLA

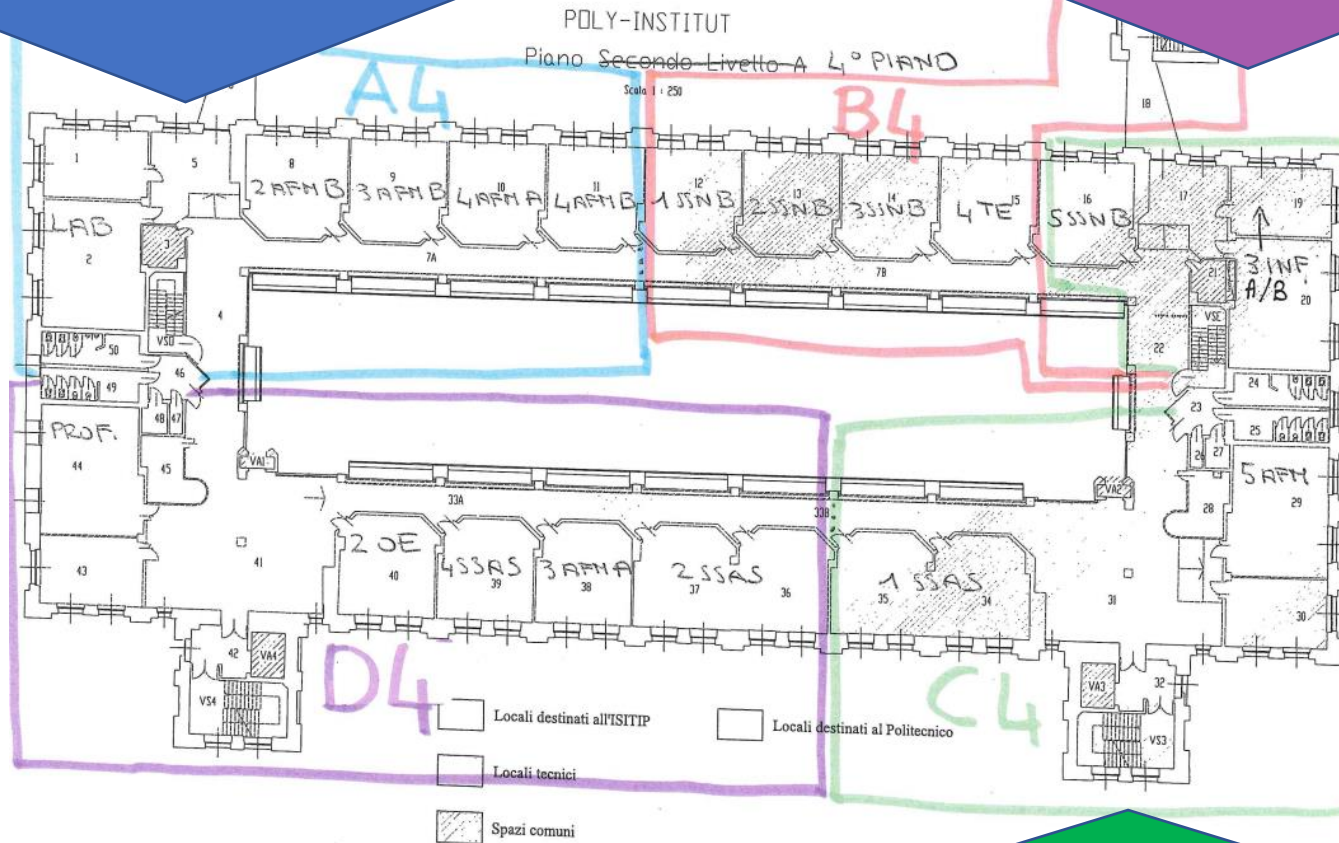
A 4- torretta A  
INGRESSO CLASSI

2 AFM B, 3 AFM B, 4 AFM A, 4  
AFM B

B 4- torretta B  
INGRESSO CLASSI

1 SSNB, 2 SSN B, 3 SSN B, 4 TE

D 4- ingr. principale  
INGRESSO CLASSI  
2 OE, 2 SSAS, 4 SSAS, 3  
AFM A



C 4- torretta C

INGRESSO CLASSI

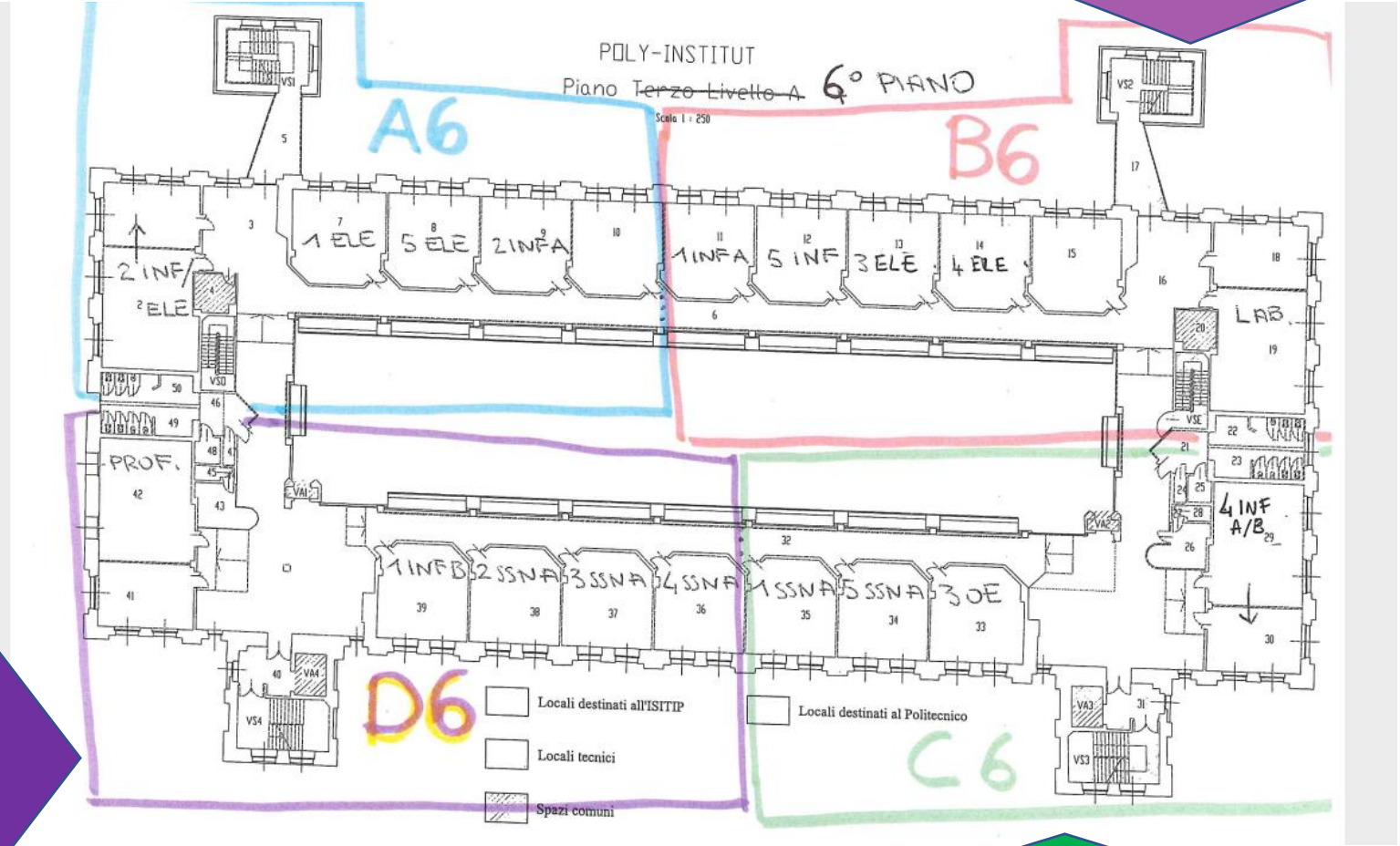
1 SSAS, 5 SSN B, 3 INF A/B, 5 AFM

# Edificio "Brambilla" PIANO SESTO

A 6- torretta A  
 INGRESSO CLASSI  
 1 ELE, 5 ELE, 2 INF A,  
 2 INF /ELE

B 6- torretta B  
 INGRESSO CLASSI  
 1 INF A, 3 ELE, 4 ELE, 5 INF

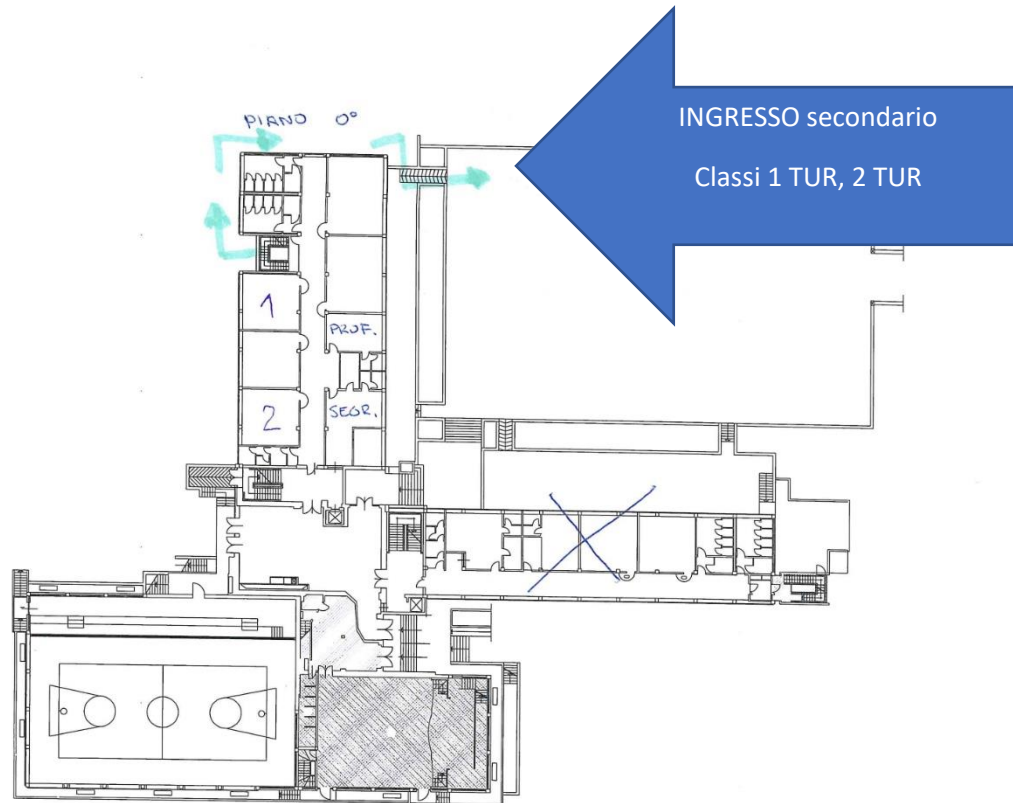
CORTILE e  
 PORTICATO  
 PRINCIPALE  
 BRAMBILLA



D 6- ingr. principale  
 INGRESSO CLASSI  
 1 INF B, 2 SSNA, 3 SSN  
 A, 4 SSN A

C 6- torretta C  
 INGRESSO CLASSI  
 1 SSN A, 4 INF A/B, 5 SSNA, 3 OE

# Saint Vincent Piano Zero



# Saint Vincent Piano Primo

